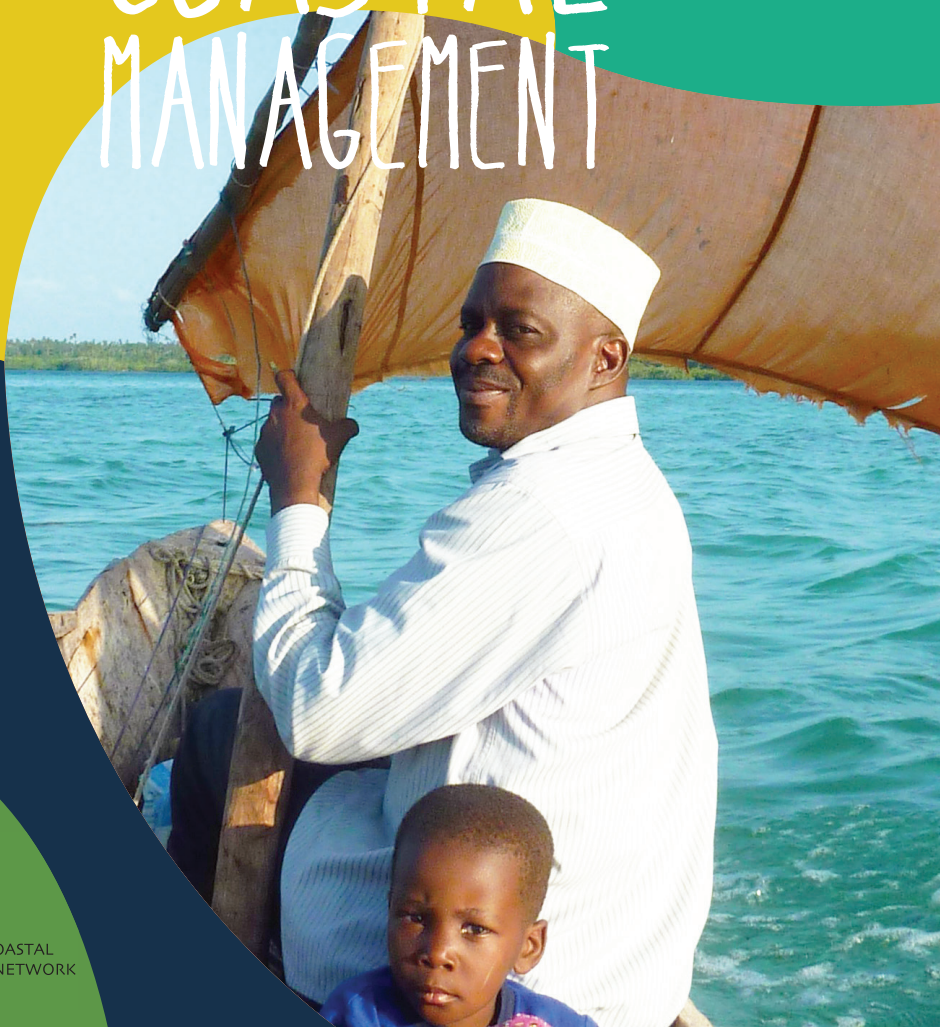


# LINKING FOR SUSTAINABLE COASTAL MANAGEMENT



MWAMBAO COASTAL  
COMMUNITY NETWORK

**MWAMBAO** believes that coastal communities are the best managers of their local marine resources. With improved knowledge, support and resources they can be a driving force for change for the better.



*"In Mtondooni it was the tradition that people could not fish until the 15th of the lunar month, but now everyone goes at any time they choose."*

- The Sheha from Kisiwa Panza

## VITAL, YET THREATENED

The Tanzanian coastal and marine environment is home to coral reefs, sea grass beds, beaches, estuaries and mangrove forests, all of which support biologically diverse marine fauna and flora. It boasts a wealth of biological values, including seasonal aggregations of whale sharks, numerous nesting sites for sea turtles, critical wintering grounds for thousands of migratory shorebirds, among many others. This same environment supports the livelihoods of millions of people in the country. It is the mainstay of the artisanal fishing industry, the draw for coastal tourism, and the location of key

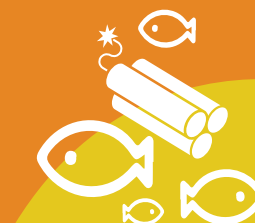
national infrastructure including industry and port development.

Yet Tanzania's diverse and resource-rich coastal ecosystems are rapidly depleting. Driven by high levels of fishing (legal and illegal) and other resource-uses due to population growth, weak coastal governance and few alternative opportunities for livelihoods, coastal resources are seriously under threat. Coastal parameters are changing incessantly and local communities, with a daily dependence on these resources, are unable to address these mounting challenges alone.



Coral Reef  
3,580 KM<sup>2</sup>

Coastal tourism is increasingly contributing to the national economy each year.



Tanzania is the only country in Africa where fishing using explosives still occurs on a large scale.



## WHO WE ARE

**Mwambao Team:** The Mwambao Team supports the learning and development of the network, communicates with and about the network, and implements supporting projects with network members and other coastal communities.

**Network Members:** Network members are resource people and active groups in their communities. They spearhead and support locally-driven projects and initiatives, which are aimed at strengthening community coastal resource management practices and informing community-based advocacy efforts.

**Tanzanian Coastal Communities:** Mwambao enables collective action and better practices for overall coastal management and livelihoods. Mwambao links its work to existing legislation (e.g. co-management opportunities within fisheries and MPA legislation) and liaises with government to support capacity building at the local level.

## WHAT WE DO



## OUR GROWING NETWORK





# OUR SERVICES

## NGOS, DONORS AND GOVERNMENT

- Develop and implement community-centered projects and initiatives
- Actualise the community role in fisheries co-management
- Document and monitor initiatives using community film

## SCIENCE

- Link marine scientific research to traditional practices, helping to pilot new approaches
- Disseminate applied research findings, good practices and technical solutions to management challenges
- Facilitate participatory monitoring and data analysis

## PRIVATE SECTOR

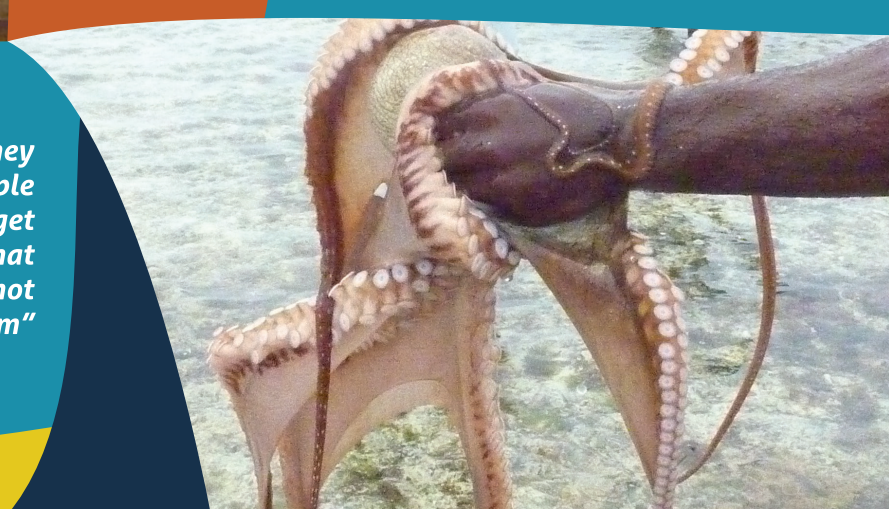
- Link environmentally sound private sector initiatives with community aspirations
- Work with all stakeholders to search for 'win-win' solutions

## COMMUNITIES

- Project Management
- Network Development
- Communications
- Championing good practice
- Participatory video for learning

*"Why haven't people changed their ways? They feel the natural resources are not theirs. People don't cut down their own cashew trees to get cashew nuts. We need to convince people that the resources are theirs. The message is not 'not to use', but 'to use wisely' as it belongs to them"*

- Government Fisheries Officer Mtwara





MWAMBAO COASTAL  
COMMUNITY NETWORK

[www.mwambao.or.tz](http://www.mwambao.or.tz)

